

## 6 | Troubleshooting

### SNMP Questions

To manage the product, assign an IP address and subnet mask.

Which port have you assigned to use for management (SNMP)?

Do you have SNMP services from the WIN CD installed?

### iView<sup>2</sup>

The IE-MiniFiberLinX-II is supported by the iView<sup>2</sup> Webserver version.

### Check Type of Cable Used

A Cat 5 Ethernet cable is required for the RJ-45 ports.

Make sure that the pins are not pulled out of the connector's casing, which will cause damage to the device's copper ports.

### PING Test

A PING test can be performed to test connectivity of the device - either on the copper port or the fiber port.

To perform a PING test, Port 3 must be set to "enable" for SNMP.

### Resources


For optimal performance of the device, make sure to download the latest version of software and firmware for the device. These are available on the B+B SmartWorx website.

For information about product specifications, please refer to the datasheet.


For information about warranty, please refer to the the website.

### Recommended Accessories

**iView<sup>2</sup> Network Management Software**  
-Free download



**Ethernet Cables**  
- Sold separately



**B+B SMARTWORX**

Powered by

**ADVANTECH**

1-888-948-2248 | Europe: +353 91 792444

[advantech-bb.com](http://advantech-bb.com)

707 Dayton Road | PO Box 1040 | Ottawa, IL 61350

Phone: 815-433-5100 | Fax: 815-433-5109

[www.advantech-bb.com](http://www.advantech-bb.com) | E-mail: [support@advantech-bb.com](mailto:support@advantech-bb.com)

## + QUICK START GUIDE



### IE-MiniFiberLinX-II Series

Compact Optical Demarcation Device  
with Telco/LastGasp

Before you begin, be  
sure you have the following:

- + IE-MiniFiberLinX-II
- + 100/240V AC input, 5V power adapter Power Supply (included)
- + Console port mini-jack adapter (included)

**B+B SMARTWORX**

Powered by

**ADVANTECH**

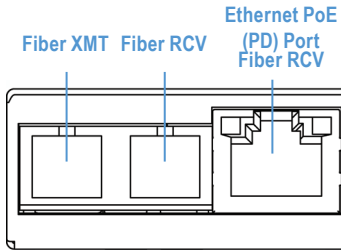
Fast and easy on the web: [www.advantech-bb.com](http://www.advantech-bb.com)

Document Number:

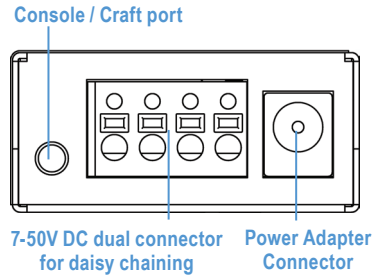
IE-MiniFiberLinX-II\_Telco-LastGasp\_56-85722-01\_R2\_3217qsg

# Product Overview

Front



Back



It does not matter which terminal is referenced (connected to) earth-ground. For example, when using a -48 VDC supply in which the positive rail is connected to earth ground, simply connect this side to a terminal block "+" terminal and the -48 VDC side to the negative terminals.



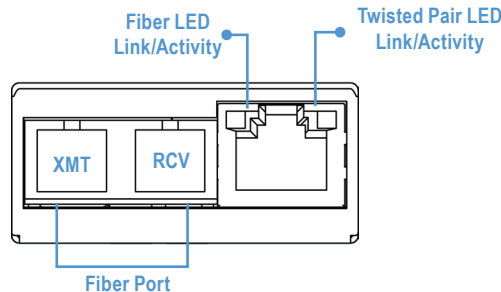
This equipment is designed to permit the connection of the grounded conductor of the DC supply circuit to the grounding conductor at the equipment.

## 3 | Connecting Fiber and Twisted Pair Cables

IE MiniFiberLinX-II is a CPE device (Remote) and can be connected to a Host device.

A Host device can be an iMcV-FiberLinX-II or a switch. (For other types of installation, please see the manual.)

1. Connect the fiber cable to the fiber port.  
FX LNK/ACT: Glows green when a link is established on the fiber port; blinks green when activity is detected on the fiber port.
2. Plug in the RJ-45 cable to the Twisted Pair port.  
TX LNK/ACT: Glows amber when a link is established on the copper port; blinks amber when activity is detected on the copper port.



## 4 | Configuration via Console Session

1. Set the computer / terminal for VT-100 emulation with the following settings: 38.4K baud, 8 data bits, 1 stop bit, no parity, no flow control.
2. Connect the RS-232 cable to the Console port, backside of the unit. Use the mini-jack adapter included with the device.

3. Start the Serial session and press the Enter Key.
4. Set IP Address, Subnet Mask, Default Gateway and SNMP Community String if direct SNMP / Telnet management is required.
5. Set Mode and Ethernet Port Config.
6. Set Password if serial port security is required (optional).
7. Type "Reboot" for changes to take effect.

```

Saved Values. (These values will be active after reboot)
IP Address      - 192.168.10.202
Subnet Mask    - 255.255.255.0
Default Gateway - 192.168.10.253
Server IP Addr - 192.168.10.207
New Prom File  - 722-00a0.bin

Current Values. (These values are in use now)
IP Address      - 192.168.10.202
Subnet Mask    - 255.255.255.0
Default Gateway - 192.168.10.253
Server IP Addr - 192.168.10.207
New Prom File  - 722-00a0.bin

Community String: public      Access: r/w
V1 Trap Destination: 255.255.255.255 Community String: backplane
V2 Trap Destination: 255.255.255.255 Community String: backplane

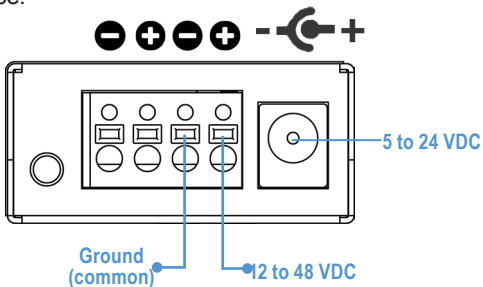
Press I to enter new saved parameter values. Press P to change Password.
Press T to enter new Trap Destination. Press X to remove All Trap Destinations.
Press C to enter new Community String. Press U to remove All Community Strings.
Press R to end session. Type HSB007 to reboot unit. Press D for DHCP On/Off.
Press SpaceBar for additional commands.
    
```

## 1 | Power Options

1. A country-specific, high-reliability power adapter (included). 100/240V AC input, 5V DC output.
2. IEEE 802.3af Power-over-Ethernet (Powered Device) standard; draws power from PoE (Power Sourcing Equipment).
3. 4-terminal DC power block.

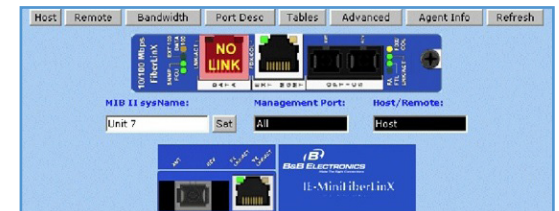
## 2 | Power Options - all Telco versions

Powering options include AC and DC power as well as Power-over-Ethernet, functioning as a PD compliant with 802.3af. To use the DC terminal block, connect to any one Positive and any one Negative terminal from a power source.



## 5 | Configuration via iView<sup>2</sup> (iConfig)

1. Computer must be attached to the local LAN connection via the copper port. The fiber port must be connected to a fiber link partner via the fiber port, and on the same Subnet Mask.
2. Start iConfig and scan for devices.
3. A new device will show IP Address 10.10.10.10 with its name IE-MiniFiberLinX-II
4. Open Session by typing in the USER NAME and USER PASSWORD. Defaults: admin/admin
5. Set the IP Address, Subnet Mask and Default Gateway as required.



The IE MiniFiberLinX-II is a CPE device, and it is not recommended to install it in pairs. It can be installed as a Remote device and connected to an iMcV-FiberLinX-II configured as the Host device.